





[www.Zricks.com](http://www.Zricks.com)



[www.Zricks.com](http://www.Zricks.com)



[www.Zricks.com](http://www.Zricks.com)



ZRICKS

[www.Zricks.com](http://www.Zricks.com)



ZIRICKS

[www.Zricks.com](http://www.Zricks.com)

1350 WIDE

UP  
DN

LIFT  
4'8"  
x5'4"

TOILET  
8'0"X4'0"

BED ROOM  
13'0"X11'6"

TOILET  
5'0"X7'0"

KITCHEN  
7'3"X7'0"

ZBRICKS  
LIV./DIN.  
21'8"X10'0"  
.COM

4'0" WIDE  
BALC.

E

BED ROOM  
12'0"X10'0"

BED ROOM  
12'7"x11'2"

BED ROOM  
12'2"x10'1"

TOILET  
9'2"x4'0"

TOILET  
8'9"x4'0"

KITCHEN  
9'2"x6'0"

BED ROOM  
12'0"x10'0"

ZRICKS .COM

LIV./DIN.  
21'6"x10'0"/13'6"

4'0" WIDE  
BALC.

A

LOBBY

UP

DN.

LIFT  
5'3"x4'6"



D

LIVING  
10'4"X21'6"

BED ROOM  
10'0"X11'0"

TOILET  
4'0"X7'6"

BED ROOM  
12'0"X11'0"

DINING  
13'6"X10'0"

BED ROOM  
13'0"X10'0"

4'0" WIDE  
BALC.

KITCHEN  
7'0"X12'0"

TOILET  
4'0"X8'2"

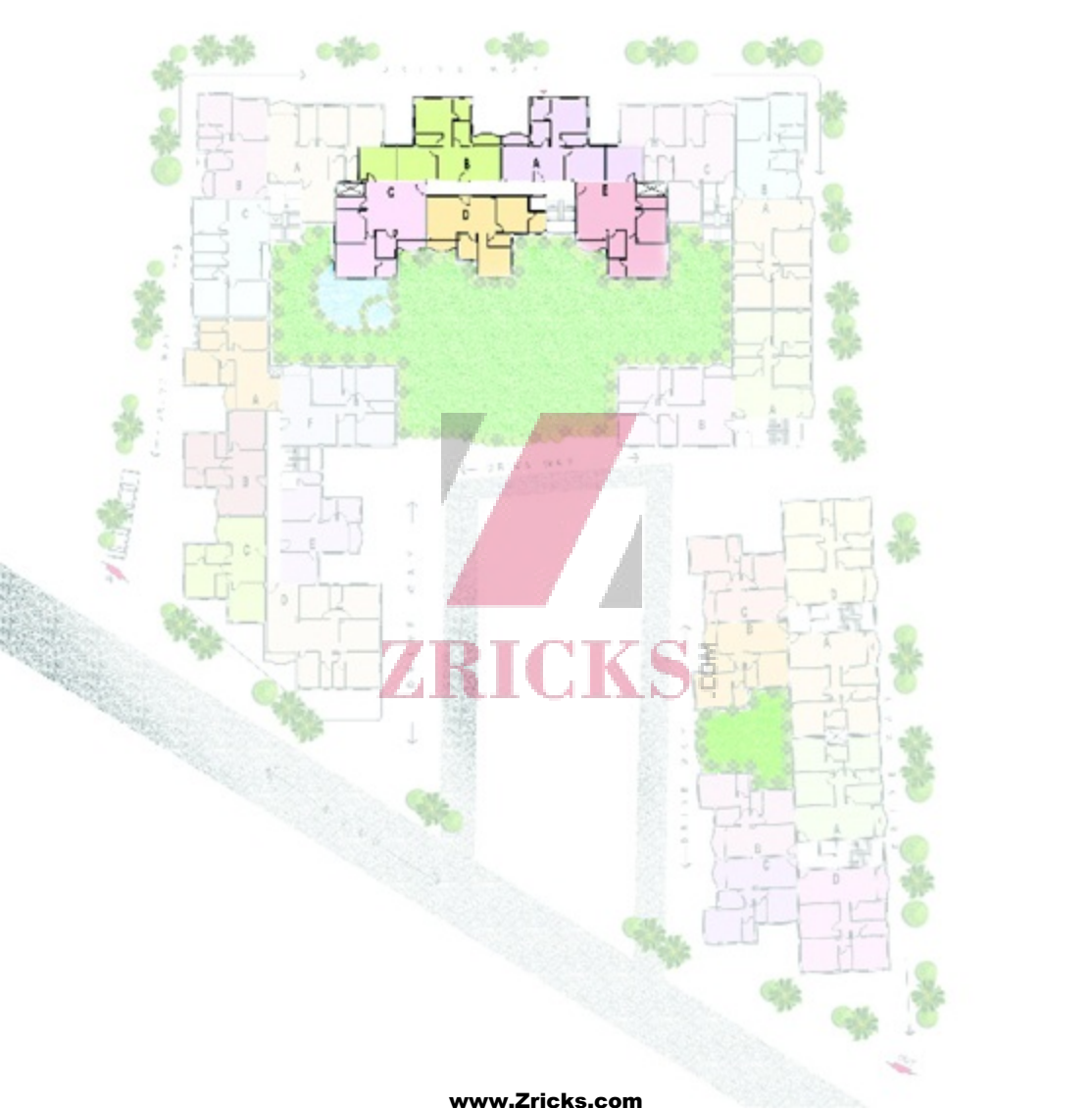
TOILET  
4'0"X8'2"

BED ROOM  
11'0"X12'0"

Open Terrace

# Location Map





**ZRICKS**

## Specifications:

<b>Structure</b>	RCC Frame structure
<b>Elevation</b>	A unique blend of ornamental and modern architecture
<b>Exterior</b>	Blending of weather-proof paint & other decorative finish
<b>Interior Walls</b>	Conventional brickwork with PoP finish
<b>Flooring</b>	Quality Marble Flooring in living, dining, kitchen & all the bedrooms
<b>Staircase &amp; Lobby</b>	Spacious staircase, elegant lobby and all floor corridors with good quality marble, kota/granite stone
<b>Kitchen</b>	Granite top platform with stainless steel sink of reputed make & glazed tiles dado upto 2 ft height above the platform
<b>Electricals</b>	Copper wiring of Finolex or equivalent in concealed conduits MCB of Havells or equivalent A.C. point in master bedroom Telephone, TV Cable point in living/dining Geyser point in attached toilet Sufficient light & fan points Modular switches of Anchor or equivalent
<b>Lift</b>	Lift of reputed make in each block
<b>Water Supply</b>	24 hours uninterrupted supply from deep boring
<b>Toilet</b>	Anti Skid tiles of Kajaria or equivalent in all the toilets Ceramic tiles of Kajaria or equivalent upto door height Provision for hot & cold water supply in attached toilets European style sanitary fittings of Parryware or equivalent Elegant CP Fitting of Jacuzzi or equivalent
<b>Windows</b>	Anodized Aluminium windows
<b>Doors</b>	Entrance polished flush door with Godrej or equivalent night latch Good quality flush doors in all other rooms
<b>Hardware</b>	Brass & stainless steel hardware fittings of reputed make

**ZRICKS** .COM



### Area Statement

#### Crimson

Flat Marked	Saleable Area	Bed Room
A	975	2
B	975	2
C	1300	3
D	1000	2
E	1295	3

### Typical Floor Plan

#### Crimson





Typical Floor Plan

Indigo & Saffron



Area Statement

Indigo

Flat Marked	Saleable Area	Bed Room
A	1295	3
B	965	2
C	965	2
D	1330	3

Area Statement

Saffron

Flat Marked	Saleable Area	Bed Room
A	1295	3
B	965	2
C	965	2
D	1330	3





Typical Floor Plan

Magenta



Area Statement  
Magenta

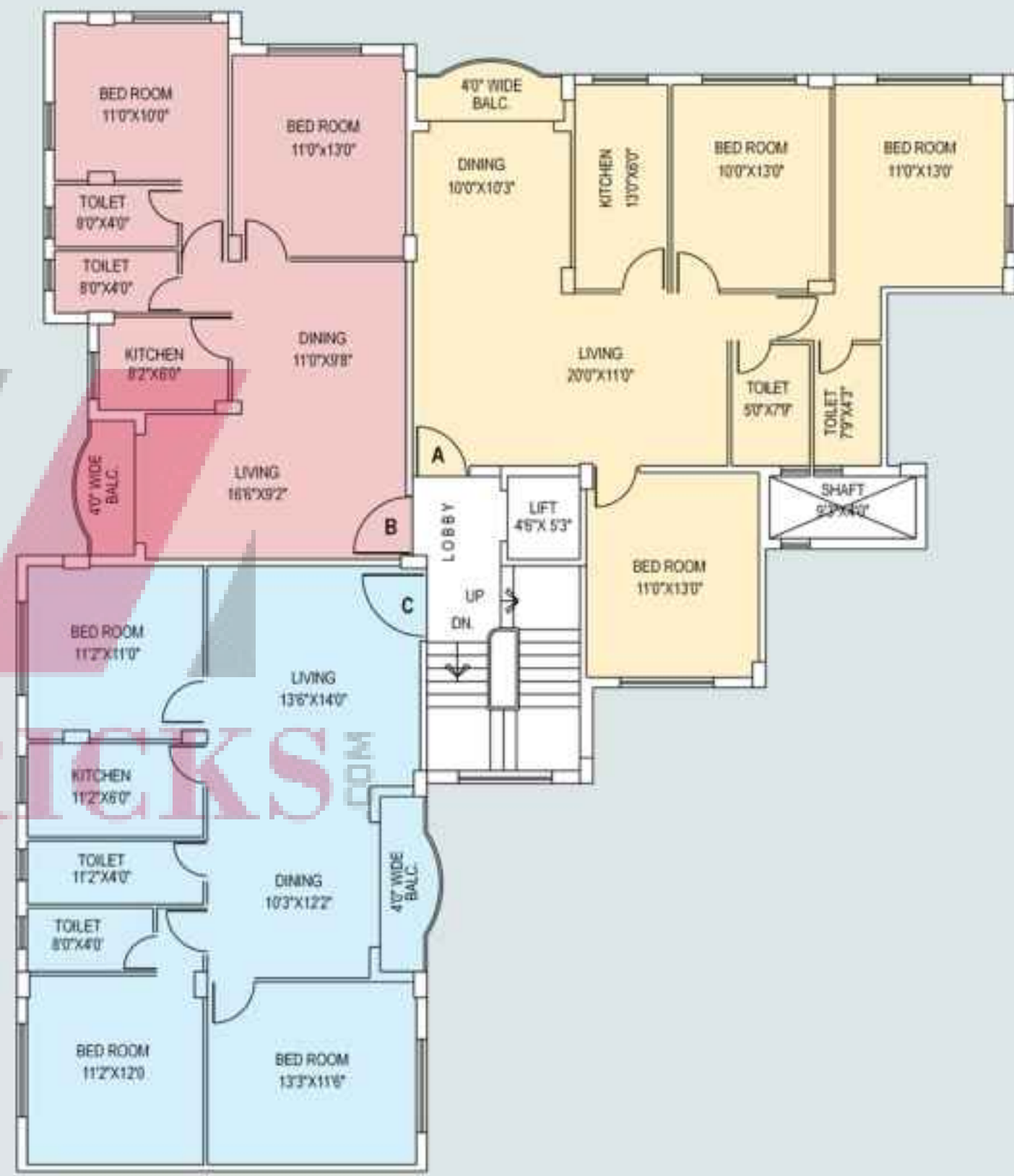
Flat Marked	Saleable Area	Bed Room
A	1010	2
B	980	2
C	985	2
D	1620	4
E	930	2
F	1335	3





Typical Floor Plan

Purple



Area Statement

Purple

Flat Marked	Saleable Area	Bed Room
A	1365	3
B	980	2
C	1320	3







Typical Floor Plan

Sienna



Area Statement  
Sienna

Flat Marked	Saleable Area	Bed Room
A	1240	3
B	980	2
C	1365	3



### Area Statement

Turquoise

Flat Marked	Saleable Area	Bed Room
A	1200	3
B	1335	3



Typical Floor Plan

Turquoise



**ZRICKS**

